

Welcome to the Twenty Third Annual Hawaii International Conference on Education



Aloha!

We are pleased to welcome you to the Twenty-Third Annual Hawaii International Conference on Education. For over two decades, this event has provided a distinctive platform for academics and professionals worldwide to exchange a diverse range of knowledge and perspectives. The primary objective of the conference is to foster cross-disciplinary collaboration, allowing participants to connect and engage with peers both within and beyond their respective fields.

The global nature of the conference brings together a rich array of viewpoints shaped by various cultures, languages, geographies, and political contexts. This diversity is further amplified by the conference's cross-disciplinary approach, which catalyzes both research and professional development.

Set against the stunning backdrop of Waikiki Beach, Diamond Head, and the expansive South Pacific, the conference venue plays an integral role in the experience. Hawaii, long a crossroads for explorers, has been historically enriched by the exchange of ideas that have passed along its shores. The Hawaii International Conference on Education continues this tradition, fostering an environment of collaboration in the spirit of Aloha. In addition to its ideal climate and natural beauty, the Hawaiian Islands offer an inspiring setting for learning and dialogue.

The 2024 conference was a resounding success, attracting over 1,100 participants from more than 47 countries worldwide. We are grateful for your participation and welcome you to the 2025 Hawaii International Conference on Education.

The 2026 Hawaii International Conference on Education is scheduled for January 8 – 11, 2026. Please check our website in early February for more details!

<http://www.hiceducation.org>

Email: education@hiceducation.org

The **Digital Proceedings Publication** can be found on our website at www.hiceducation.org (ISSN #1541-5880)

We would like to acknowledge our Co-Sponsors and Exhibitors for the 2025 Conference:

CO-SPONSORS:



Graduate School of Education & Psychology



Educational Leadership Program



National Girls & Women of Color Council, Inc.



Center for Sustainable Urban Neighborhoods

Conference Exhibitors (booths located in the Coral II Ballroom):

- U.S. Department of State – English Language Programs (elprograms.org)
- Sisterhood for Equity Consulting (sisterhoodforequity.com)
- Blue Origin’s Club for the Future (blueorigin.com)
- Sphere Education Initiatives (sphere-ed.org)
- Nathan Levy Books (storieswithholes.com)
- Keys to Literacy (keystoliteracy.com)
- Indiana Tech (indianatech.edu)

Registration Hours:

January 3, 2025 (Friday)	6:00pm - 8:00pm
January 4, 2025 (Saturday)	7:00am - 4:30pm
January 5, 2025 (Sunday)	7:00am - 4:30pm
January 6, 2025 (Monday)	7:00am - 4:30pm
January 7, 2025 (Tuesday)	7:00am - 1:00pm

(The Registration Desk is in the **Coral II Ballroom**, located in the Mid-Pacific Conference Center of the Hilton Hawaiian Village Waikiki Beach Resort)

Concurrent Session Times:

8:00 – 9:30 AM; 9:45 – 11:15 AM; 11:30 AM – 1:00 PM; 1:15 – 2:45 PM; 3:00 – 4:30 PM

Session Chairs

 are asked to:

- Introduce the participants.
- Start and end the sessions on time.
- Lead discussions. It is up to the Session Chair to decide if questions and answers will come after each paper or if questions and answers will come after all the papers of the session are presented.

All participants in each of the sessions should feel free to consider themselves as discussants.

Poster Sessions:

All Poster Sessions will be held directly outside of the Coral Ballroom in the **Coral Lounge**. Presenters will be able to meet one-on-one or in small groups with interested participants for detailed discussions regarding their research. Magnetic white boards (48” wide x 32” tall) and magnets to affix your printed poster will be provided for poster presenters.

Roundtable Sessions:

All Roundtable Sessions will be held in the **Coral III Ballroom**. Presenters will have 25 minutes to lead a discussion with interested attendees. After the 25 minutes, attendees will have 5 minutes to select a new table, and the process repeats for the 90 minute long session. No audio/visual equipment will be provided for these sessions. They are meant to be discussions, not presentations.

Internet Access:

Internet access is NOT provided in any of the presentation rooms. Limited Internet access will be provided in the registration room only. **If you have your own laptop with wireless Internet capabilities**, you will be able to pick up our wireless signal in and around the registration room. The wireless Internet SSID is “HICattendee”. Password: **HAWAII2025**

Internet access is NOT provided in any of the presentation rooms.

Breakfasts

 - Four breakfasts are included with your paid registration:

(Conference Badge is required for entry into Breakfasts)

1/4/2025	Saturday	7:00 AM – 9:00 AM	Coral III Ballroom
1/5/2025	Sunday	7:00 AM – 9:00 AM	Coral III Ballroom
1/6/2025	Monday	7:00 AM – 9:00 AM	Coral III Ballroom
1/7/2025	Tuesday	7:00 AM – 9:00 AM	Coral III Ballroom

Additional breakfasts for guests are available for \$50(per day) at the registration desk.

Coffee Breaks:

Saturday - Monday	10:30 AM – 11:30 AM and 2:30 PM – 3:30 PM
Tuesday	10:30 AM – 11:30 AM

Coffee breaks will be located near the registration room (Coral II Ballroom)

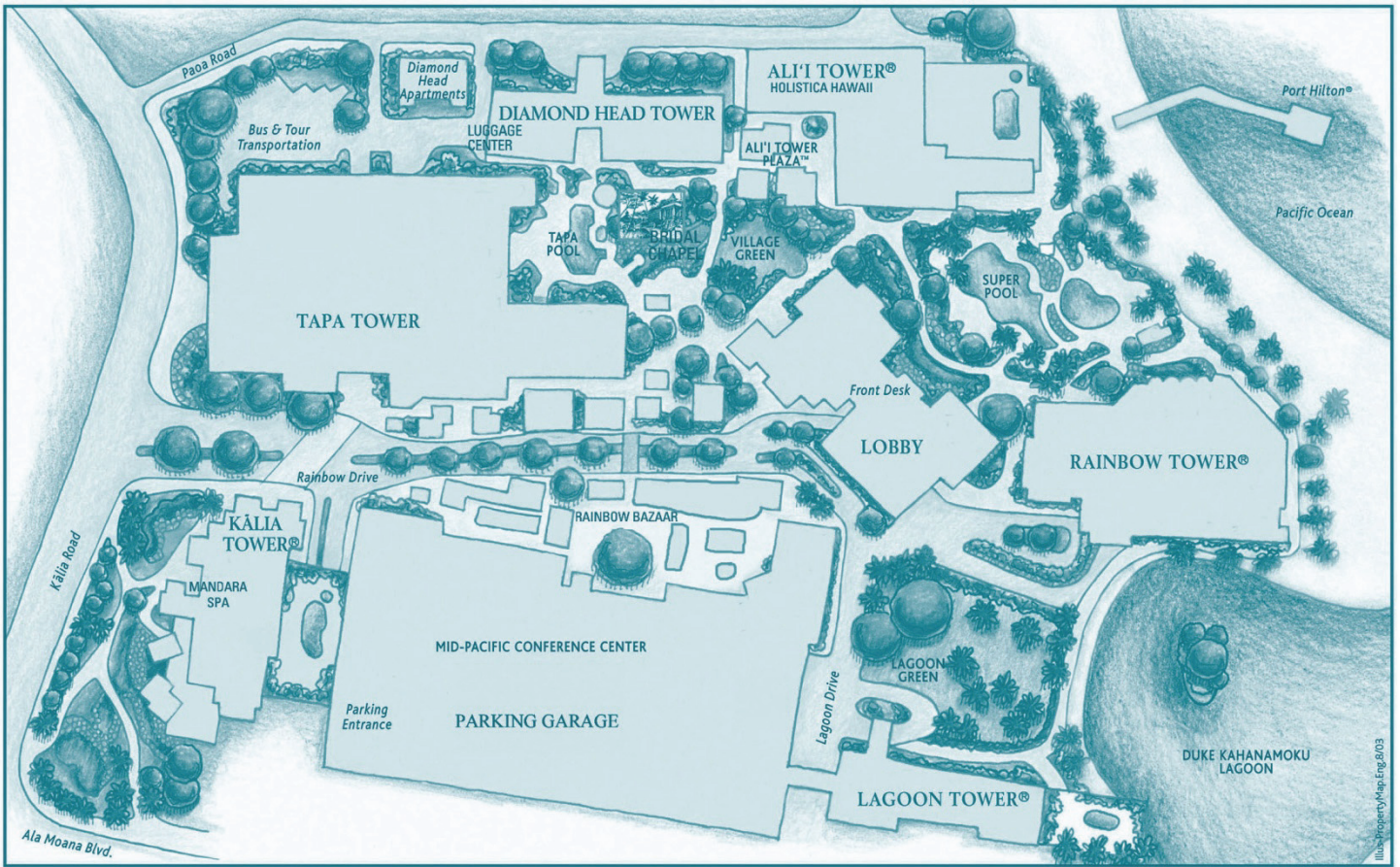
Audio/Visual Equipment:

The conference will provide the following in each presentation room (excluding poster and roundtable sessions):

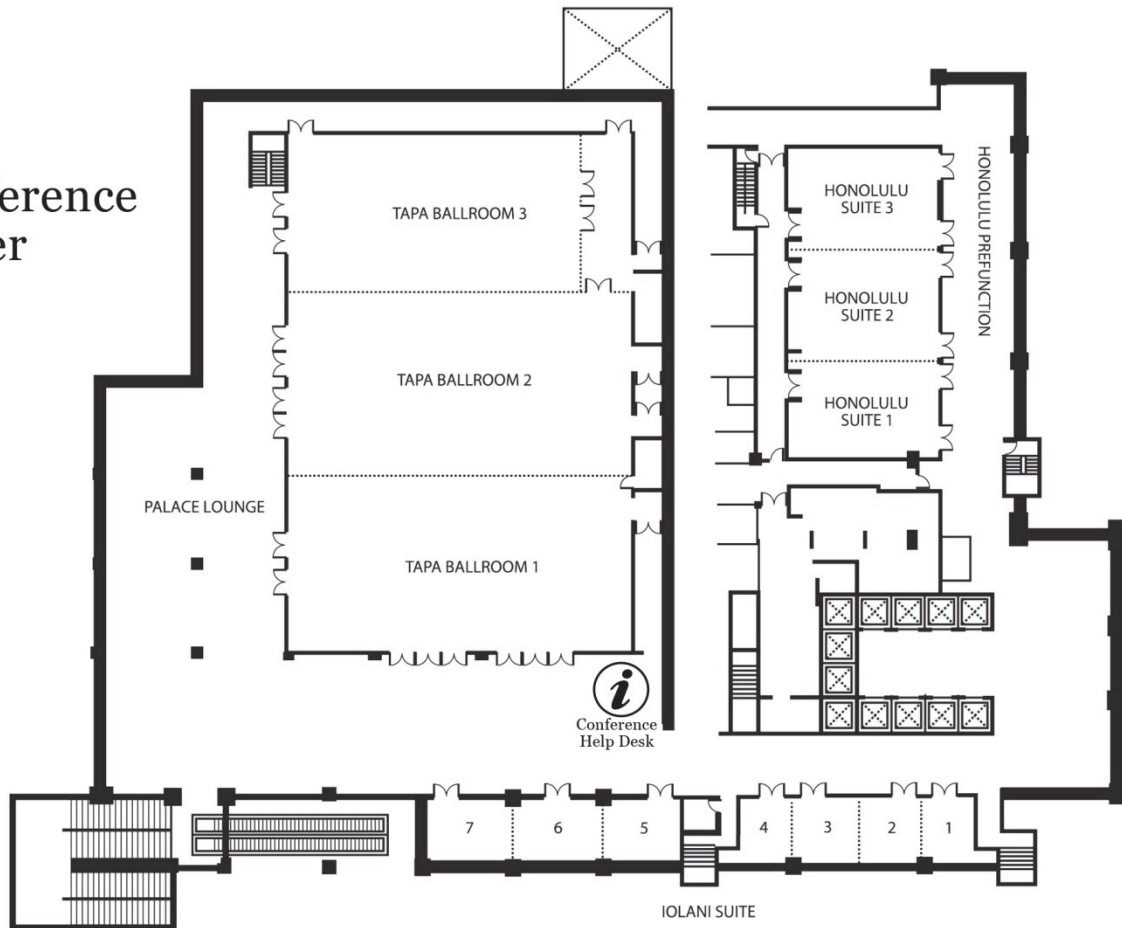
- ✓ Video Projector with speakers
- ✓ Standard HDMI Cable for laptop hookup with adaptors for Display Port, USB-C, and MacBooks

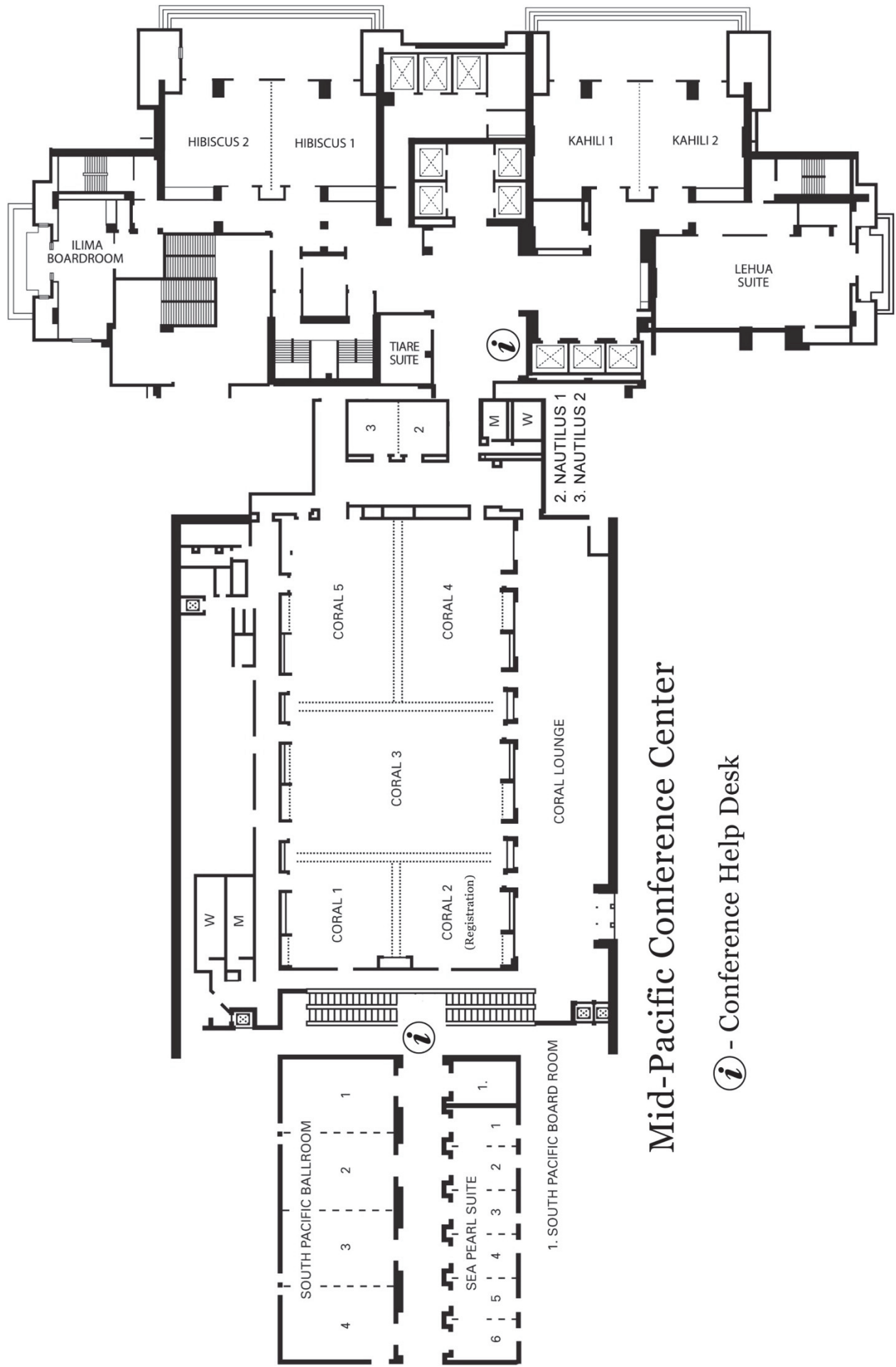
Please note that **Internet access is NOT provided** in any of the presentation rooms.

HILTON HAWAIIAN VILLAGE® BEACH RESORT & SPA



Tapa Conference Center





Mid-Pacific Conference Center

i - Conference Help Desk

Kalia Tower

Time: 11:30 AM - 1:00 PM / **Monday** - 1/6/2025 / **Room:** South Pacific 1
Session Topic: Higher Education - Workshop **Session Chair:** Kennedy, Denise

Supporting Students Through the Fearless Classroom

The Fearless Classroom provides faculty with the skills and knowledge to create a supportive classroom environment encouraging students to reach their potential. There is trust and respect between the instructor and students, and between students themselves. Faculty provide a psychologically safe learning environment, demonstrate empathy, compassion, and humility to students in all modes of instruction. Data indicated that there was significant positive change from the beginning of a course to the end.

Kennedy, Denise — California State Polytechnic University, Pomona

Heimler, Ron — California State Polytechnic University, Pomona